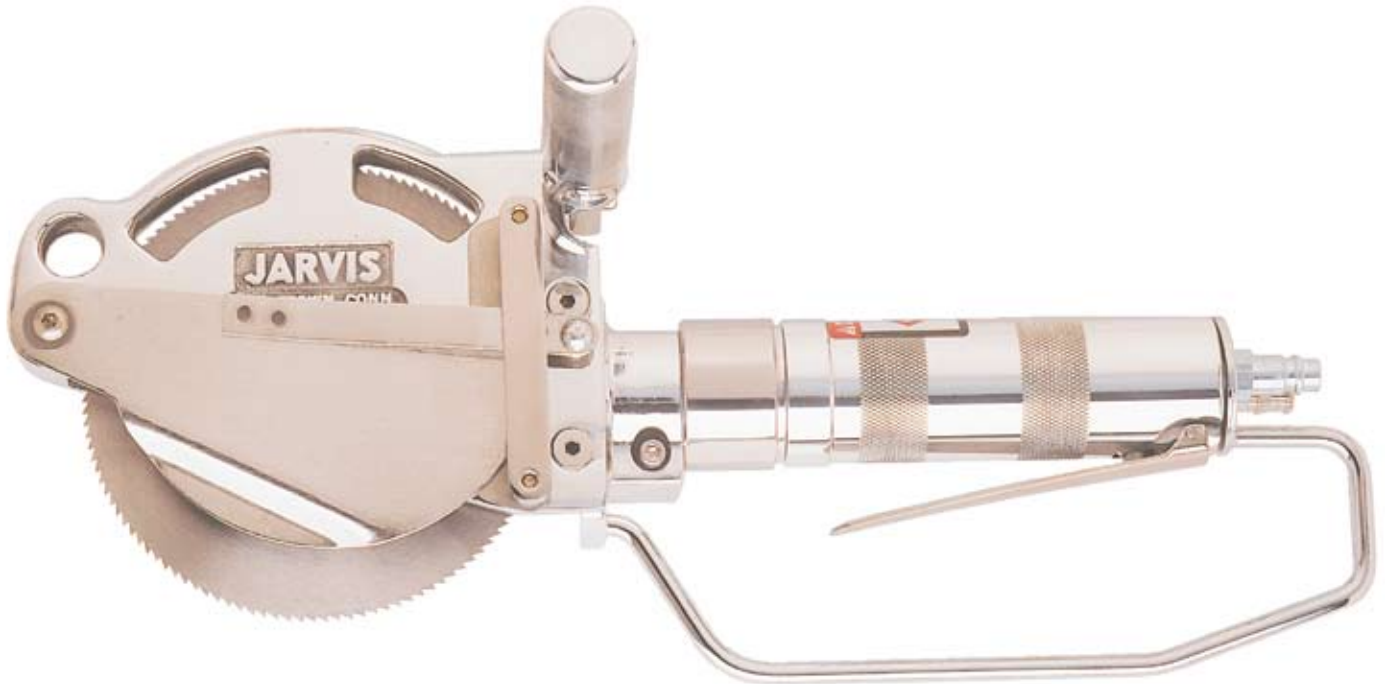


CIRCULAR SCRIBING SAW

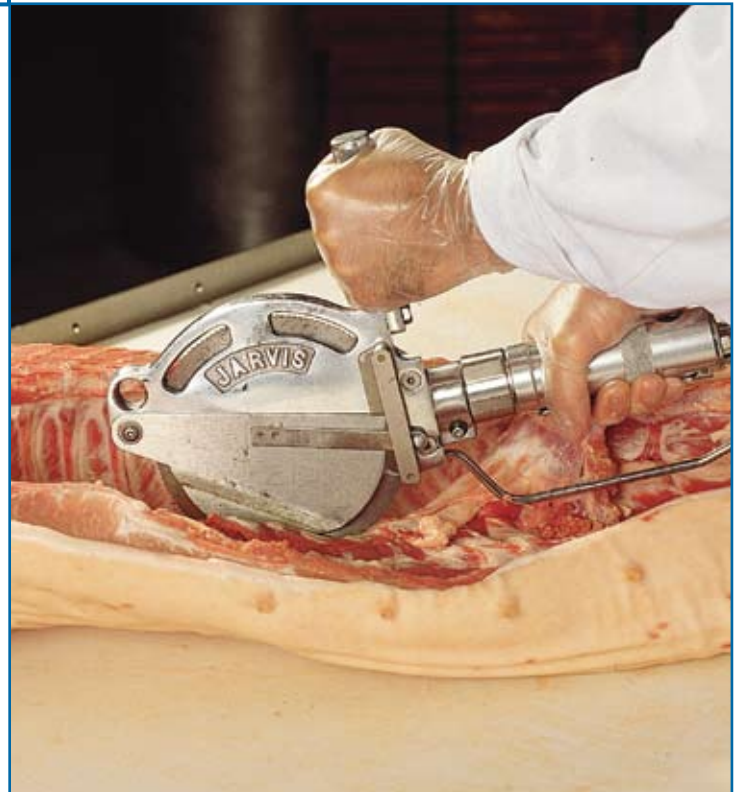
Model 800G



**The Jarvis Model 800G -
pneumatically powered scribe saw.**

JARVIS

- The 800G, with a 1.5 in (38 mm) depth of cut, is ideally suited for:
 - Pork: ribbing and scribing.
- Lightweight and flexible - allows operators to work single handed, both hanging and on the table.
- Reduces operator fatigue.
- Rear end exhaust and constructed from corrosion resistant materials for optimum hygiene.
- Lever style adjustable depth gage for precise depth control and trouble-free operation.
- Fast blade stop.
- Meets national and international requirements for hygiene and safety.



THE G SAWS - POWERFUL, LIGHTWEIGHT, FLEXIBLE

CIRCULAR SCRIBING SAW

Model 800G

Specifications

Drive	Pneumatic
-------	-----------

Model 800G

Motor Power	0.7 hp	522 W
Operating Pressure	100 psi	6.9 bar
Air Consumption	24 ft ³ / min	0.66 m ³ / min
Blade Speed		2000 rpm
Control Handle		
Single Trigger		Pneumatic
Blade Diameter	5.5 in	140 mm
Cutting Depth (maximum)	1.5 in	38 mm
Overall Length	16 in	406 mm
Weight	5.8 lbs	2.6 kg
Vibration	less than (<) 128 dB	<2.5 m/sec ²
Noise (one meter from tool)		87 dB

Equipment Selection and Accessories	Order Number
-------------------------------------	--------------

Model 800G	4001020
Air Hose	length 16 ft / 5 m 3059018
Air Filter / Regulator / Lubricator	3022003
Blades	
5.5 in / 140 mm diameter blade - 120 teeth	1023005
5.5 in / 140 mm, skip tooth diameter blade - 60 teeth	1023104
Optional:	
"T" Handle - Middle	1019189
Mushroom Handle	1019187
Auxiliary Repair Handle Kit	3019148
Balancer	4042033



Products for the meat and poultry industry